



Photo courtesy of National Park Service

Theodore Roosevelt National Park: Air Quality at Risk

Park highlights

- One of the few islands of designated wilderness in the Northern Great Plains, Theodore Roosevelt National Park protects 70,447 acres of the colorful and ecologically rich Little Missouri River Badlands in western North Dakota.
- The park is home to a variety of prairie plants and animals, including bison, elk, and wild horses.
- 100 miles of trails in the park provide visitors with many opportunities for outdoor recreation.

Current air quality

- Theodore Roosevelt National Park is located in a rural area and now has relatively clean air.
- Even a little air pollution builds up over time, and park air quality suffers from the long-term cumulative effects of air pollution caused by oil and gas production and coal-fired power plants.

New coal-fired power plants

- A new coal-fired power plant is under active development only 56 miles (90 km) from Theodore Roosevelt National Park, while three others are proposed for construction just beyond 186 miles (300 km).
- Each year, this enormous new plant would emit in the park area air shed more than 3 million tons of carbon dioxide, 1,524 tons of sulfur dioxide, 2,286 tons of

nitrogen oxides, and 660 pounds of toxic mercury. Because park air is now relatively clear, this new pollution will have a dramatic and noticeable impact on park visibility and will add significantly to long-term pollution damage.

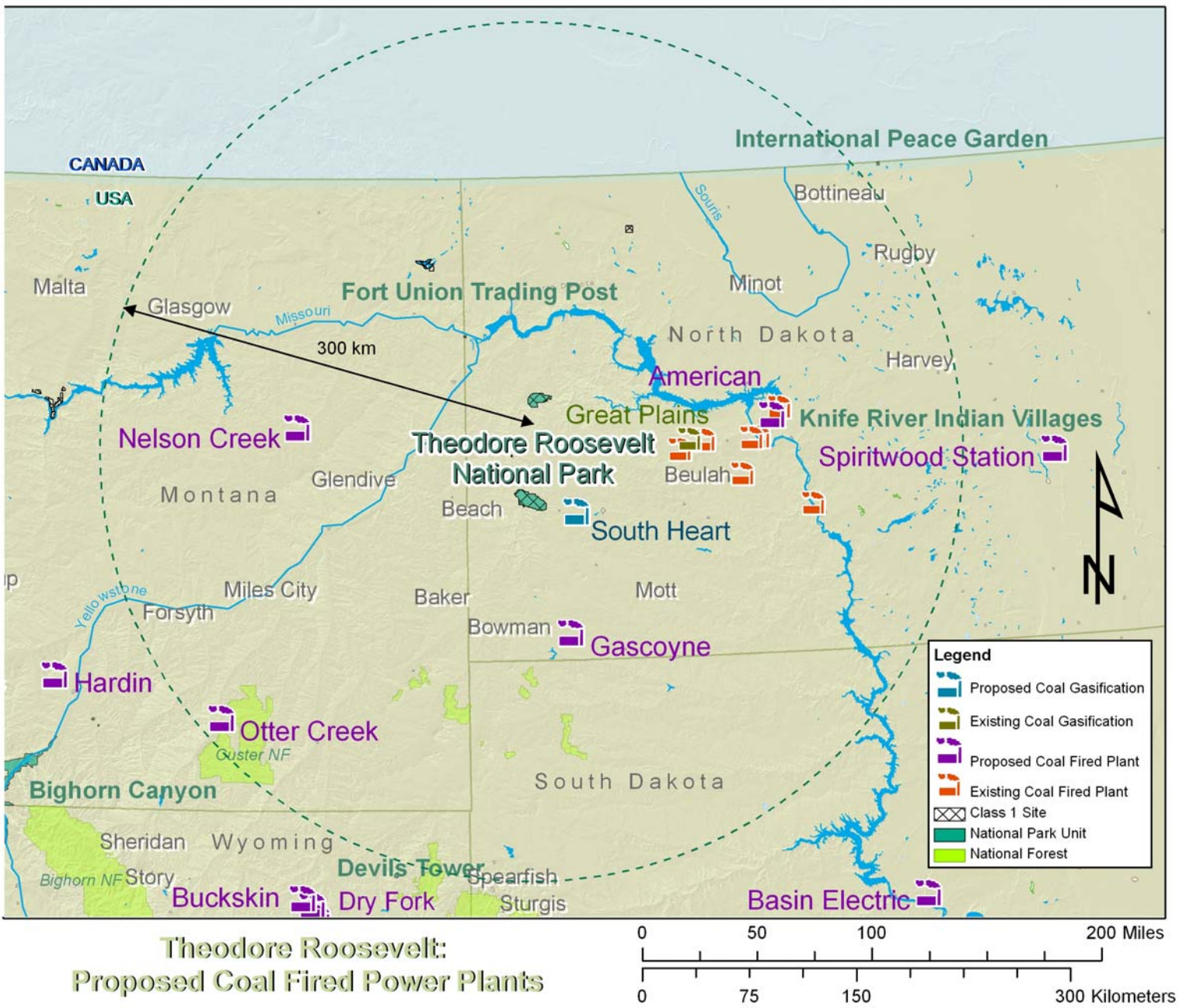
- This new coal plant will emit massive amounts of toxic mercury into the park ecosystem, threatening fish and other park wildlife. By way of comparison, the eight coal-fired power plants under development near Shenandoah National Park will, combined, emit less mercury than the one new plant proposed near Theodore Roosevelt National Park.

National Park Service findings

- “Based on the available information, [NPS] ha[s] determined that emissions from the proposed [Gascoyne] facility could adversely impact visibility at Theodore Roosevelt NP.”
- “[P]roposed emissions from the Gascoyne plant alone would result in perceptible [haze] at Theodore Roosevelt NP up to 19 days per year. We consider these impacts to visibility to be adverse because they would diminish the national significance of Theodore Roosevelt NP and potentially impair the quality of the visitor experience to that area.”



National Parks Conservation Association®
Protecting Our National Parks for Future Generations®



Power plants that have received permits or are in active permit process

Plant	Location	Owner	Size (MW)	Distance from Park	CO2 tons/yr	SO2 tons/yr	NOx tons/yr	Hg lbs/yr	Permit Status
Gascoyne Generating Station	Bowman County, ND	Westmoreland Power	500 MW	90 km	3,250,000	1,524	2,286	660	Draft air permit issued May 2007
Total New Pollution into Theodore Roosevelt National Park Area Airshed					3,250,000	1,524	2,286	660	

For more information contact: Stephanie Kodish, 865.329.2424, ext. 28, skodish@npca.org