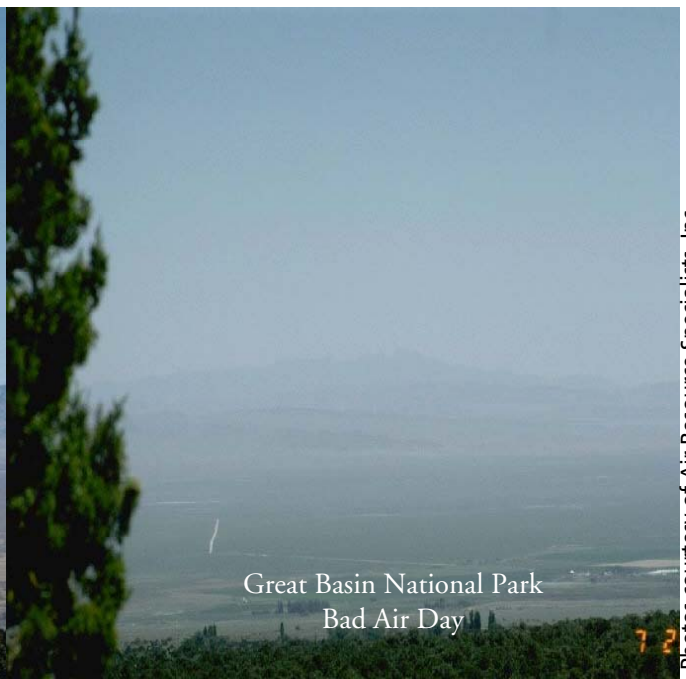




Great Basin National Park
Good Air Day



Great Basin National Park
Bad Air Day

Photos courtesy of Air Resource Specialists, Inc.

Great Basin National Park: Air Quality at Risk

Park highlights

- Great Basin National Park in Nevada preserves over 77,000 acres of the Great Basin of the Western United States, a 200,000 square mile area. From the sagebrush at its base to the 13,063-foot summit of Wheeler Peak, the park includes streams, lakes, and numerous limestone caverns, including beautiful Lehman Caves.
- At Great Basin, hot desert valleys meet mountain ranges. Its diverse ecosystem, includes prickly pear cactus, sagebrush, aspen, fragile alpine wildflowers and ancient bristlecone pines, the world's oldest living things. Mountain lions, Clark's nutcrackers, snakes, and jackrabbits roam the park.

Current air quality

- Visibility in Great Basin National Park declines after periods of sustained northeasterly winds, when a brown-yellow haze appears in Snake Valley, obscuring the mountains east of the park.
- The National Park Service is closely monitoring visibility, nitrogen deposition and ozone in the park, all of which show signs of growing worse.

New coal-fired power plants

- Six large, new coal-fired power plants are under active development within 186 miles (300 km) of Great Basin.

This area already has four operating coal-fired power plants; two others operate just beyond that distance.

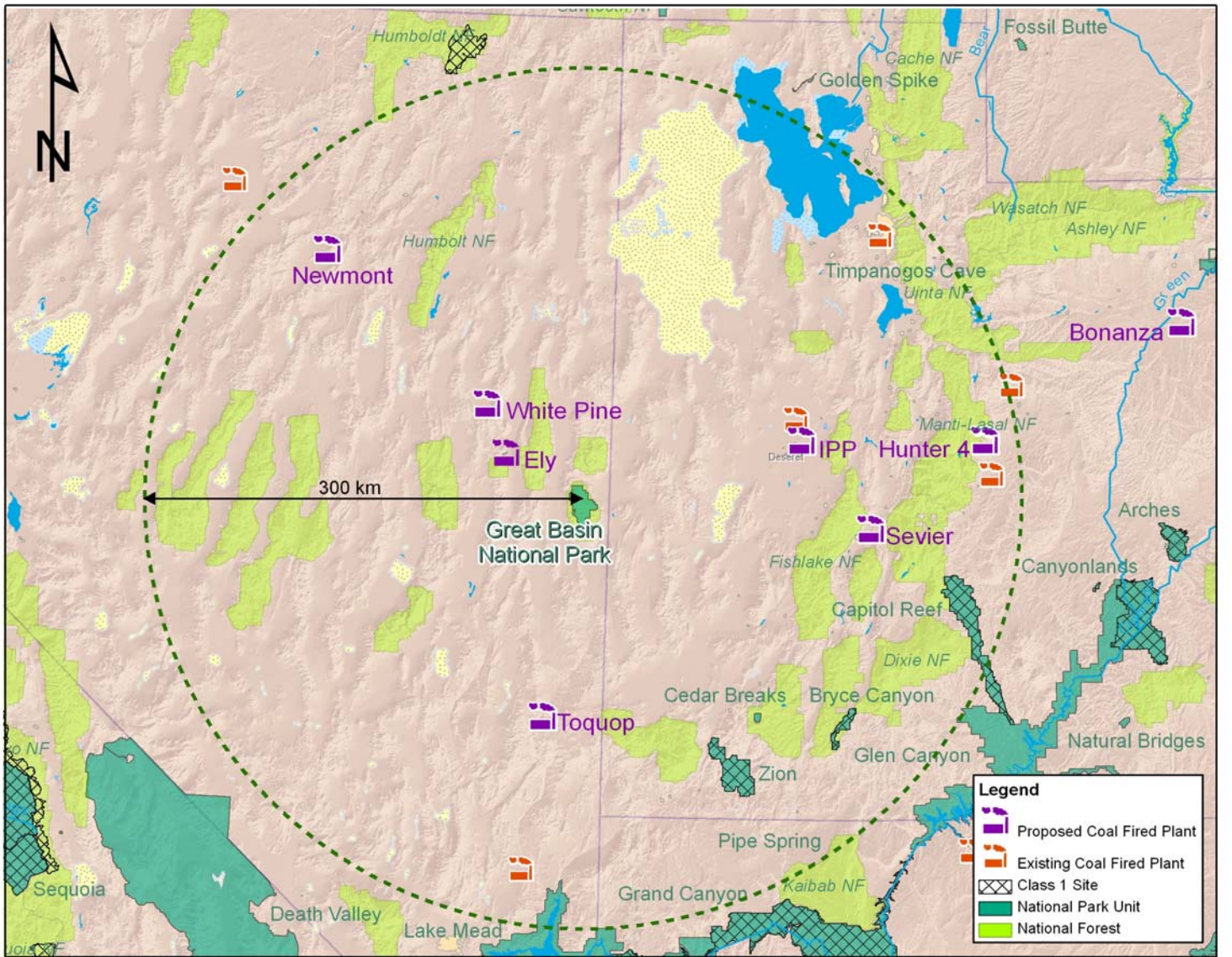
- Each year, these six new plants would emit into the Great Basin area air shed more than 46 million tons of carbon dioxide, 16,656 tons of sulfur dioxide, 15,494 tons of nitrogen oxides, and 800 pounds of toxic mercury. This new pollution will cause hazy skies to be the norm rather than the exception at Great Basin. It will also massively increase acidic pollution in the park, which over time will cause the abundance and diversity of fish, plants, and other wildlife to decline.

National Park Service findings

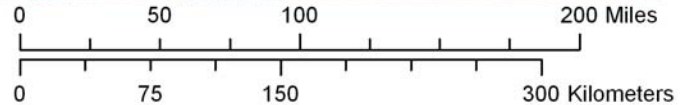
- "The issuance of the permit proposed by the Ely Energy Center would compromise the [Great Basin National Park's] air quality, water quality and viewsheds and dark night skies."
- "The Park Service's analysis has found that the proposed levels of emissions [from Ely Energy Center] will result in a significant reduction in visibility at [Great Basin National Park] and to the surrounding area... Proposed sulfur, nitrogen and mercury [pollution] rates associated with the Ely Energy Center could potentially impact the pristine water quality of the park's lakes and streams as well as affecting the wildlife and fish dependent upon them."



National Parks Conservation Association®
Protecting Our National Parks for Future Generations®



Great Basin: Proposed Coal Fired Power Plants



Power plants that have received permits or are in active permit process

Plant	Location	Owner	Size (MW)	Distance from Park	CO2 tons/yr	SO2 tons/yr	NOx tons/yr	Hg lbs/yr	Permit Status
White Pine Energy Station Project	White Pine County, NV	White Pine Energy Assoc.-Dynergy/LS Power Assoc.	1,590 MW	85 km	12,600,000	6,071	4,814	279	Draft air permit issued December 2006
Ely Energy Center	White Pine County, NV	Nevada Power Co. and Sierra Pacific Power Co.	1500 MW	60 km	16,000,000	4,853	4,628	263	Draft air permit issued December 2007
Newmont	Eureka County, NV	Newmont Mining Corporation	200 MW	270 km	1,224,791	578	596	35	Final air permit issued July 2007
Toquop Energy Project	Lincoln County NV	Sithe Global Energy	750 MW	210 km	4,875,000	1,352	1,614	131	Draft air permit issued December 2007
Sevier Power Co. Project	Sevier County, UT	Sevier Power Co. NEVCO Energy Co.	270 MW	190 km	1,755,000	234	1,067	9	Final air permit issued October 2004
Intermountain Power Plant	Millard County, UT	Intermountain Power Agency	950 MW	150 km	9,922,200	3,568	2,775	83	Final air permit issued October 2004
Total New Pollution into Great Basin Area Airshed					46,376,991	16,656	15,494	800	

For more information contact: Lynn Davis, 702.281.7380, ldavis@npca.org