



Photo courtesy of National Park Service

Capitol Reef National Park: Air Quality at Risk

Park highlights

- Located in Utah, Capitol Reef National Park was established to protect the grand and colorful geologic feature, the Waterpocket Fold, a nearly 100-mile long warp in the Earth's crust.
- The most scenic portion of the Fold, found near the Fremont River, is known as Capitol Reef: *capitol* for the white domes of Navajo sandstone that resemble building domes, and *reef* for the rocky cliffs which are a barrier to travel.
- The park's historic Fruita orchards are the largest within the National Park System, with 2,600 fruit and nut trees.

Current air quality

- Large pollution sources near Capitol Reef National Park include power plants, refineries, and lime kilns in Arizona and Nevada. Pollutants also travel greater distances to the park from sources throughout the Southwest.
- Visibility in the park is often impaired by haze caused by these facilities.
- Nitrogen and sulfur pollution in the park are above natural conditions. These pollutants damage American Indian artifacts, threaten local plants and animals, and put visitors' health at risk.

New coal-fired power plants

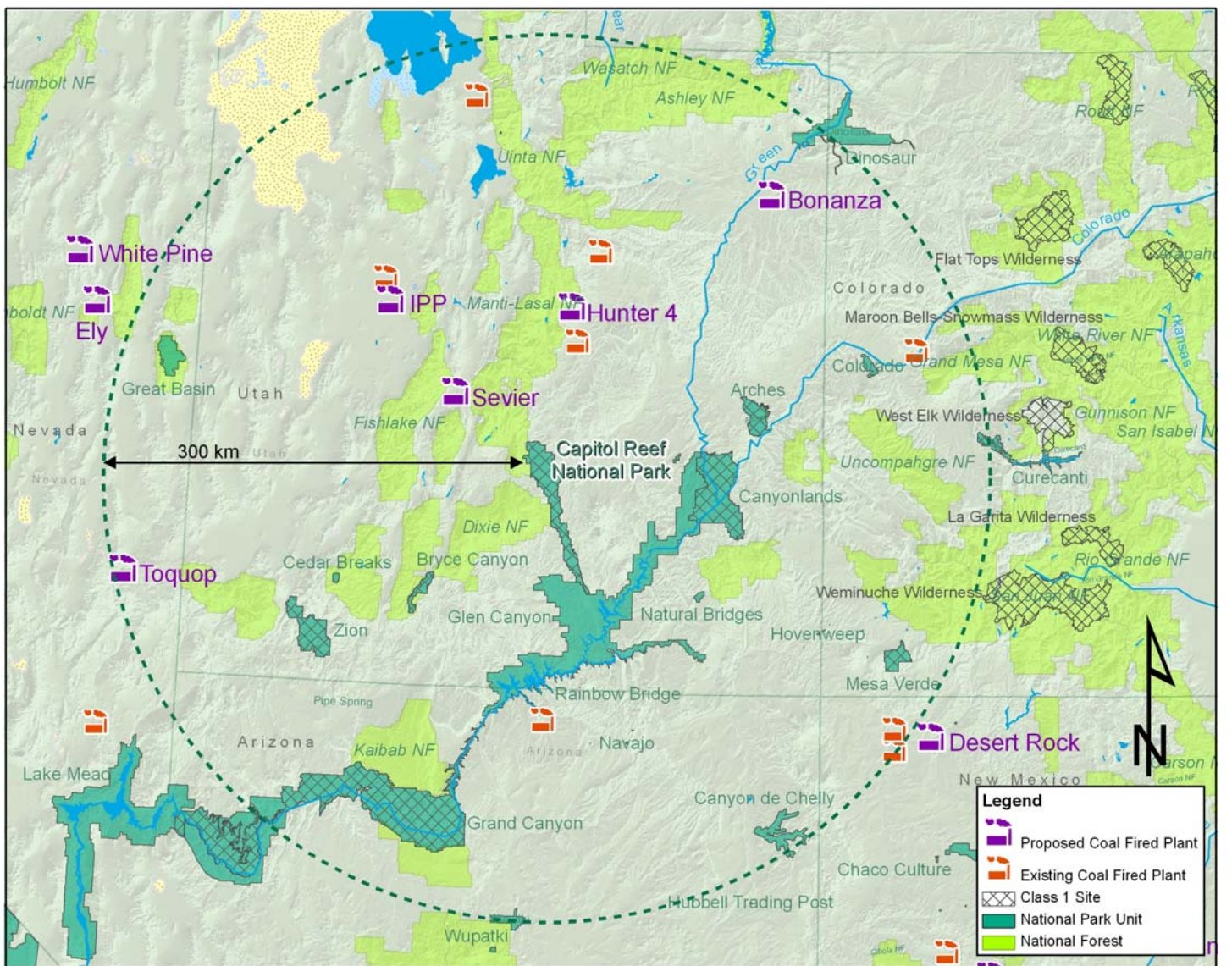
- Five new coal-fired power plants are under active development within 186 miles (300 kilometers) of Capitol Reef National Park, in a region that already has five coal-fired power plants; three others are proposed just beyond that distance.
- Each year, these five plants would emit into the Capitol Reef area air shed more than 26 million tons of carbon dioxide, 8,821 tons of sulfur dioxide, 9,338 tons of nitrogen oxides, and 501 pounds of toxic mercury. As a result, there will be fewer clear days in the park, more damage to archaeological sites, and a higher health risk to park visitors.

National Park Service findings

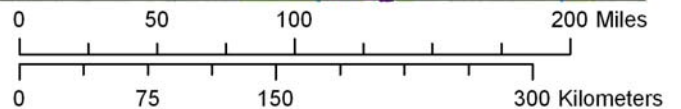
- "We are concerned with the large increase in air pollution emissions in the area of the five Utah [national] parks from several recently proposed power plants. These five national parks have some of the most pristine air in the NPS system, and the NEVCO site is located upwind from the parks in this "clean air corridor."
- "...We remain concerned about potential cumulative impacts on visibility, especially at Capitol Reef NP."



National Parks Conservation Association®
Protecting Our National Parks for Future Generations®



Capitol Reef: Proposed Coal Fired Power Plants



Power plants that have received permits or are in active permit process

Plant	Location	Owner	Size (MW)	Distance from Park	CO2 tons/yr	SO2 tons/yr	NOx tons/yr	Hg lbs/yr	Permit Status
Sevier Power Company Project	Sevier County, Utah	Sevier Power Company - NEVCO Energy Company	270 MW	60 km	1,755,000	234	1,067	9	Final air permit issued October 2004
Intermountain Power Plant	Millard County, UT	Intermountain Power Agency	950 MW	149 km	9,922,200	3,568	2,775	83	Final air permit issued October 2004
Toquop Energy Project	Lincoln County NV	Sithe Global Energy	750 MW	295 km	4,875,000	1,352	1,614	131	Draft permit issued December 2007
Desert Rock Energy Project	San Juan County, NM	Sithe Global Energy/Dine Power Authority	1500 MW	240 km	8,921,928	3,319	3,325	263	Draft air permit issued July 2006
Bonanza Power Plant	Uintah County, UT	Deseret Power Electric Coop.	110 MW	250 km	715,000	348	557	15	Final permit August 2007
Total New Pollution into Capitol Reef National Park Area Airshed					26,189,128	8,821	9,338	501	

For more information contact: Karen Hevel-Mingo, 801.521.0785, khevel-mingo@npca.org